



The David Brown Series G Industrial Gearbox *from Cone Drive*

Heavy load capacity and maximum efficiency in an easy-to-service split-case housing



- Optimized gear geometry for maximum strength and efficiency
- Minimum noise and vibration
- Our split-case housing design makes on-site maintenance easy and fast



- Available with pre-engineered alignment-free mounting options
- Adapter/base plates can make the Series G a drop-in replacement for your current gearbox

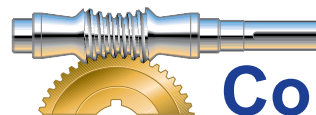
Reduce downtime, simplify maintenance, and get quick delivery with Series G helical parallel shaft and bevel helical right angle industrial gearboxes. These powerhouse designs were created for long life and reliability in medium- and heavy-duty power transmission applications. Whether you're conveying, lifting, mixing, pumping, or fabricating, there's a Series G for your requirement.

But these gearboxes offer more than power. Our split-case housings make it easy to access internal components, so you can perform routine maintenance and bearing changes on-site. There's no need for special tooling, expensive lifting, or extended downtime.

Best of all, the Series G has a two-week delivery on standard configurations. This is one big package that you don't have to wait for! High capacity, maximum efficiency, easy maintenance, and fast delivery...the Series G puts it all together for you.



Series G Sizes	14 15 16 17 18 19 21 22
Series G Ratios	6.3:1 to 315:1 in double, triple, and quadruple gear reduction stages
Motor Capacity	Input power up to 3000 HP (2250 kW)
Output Torque Capacity	Output torque up to 1,450,000 in-lb (164,000 Nm)



Cone Drive™

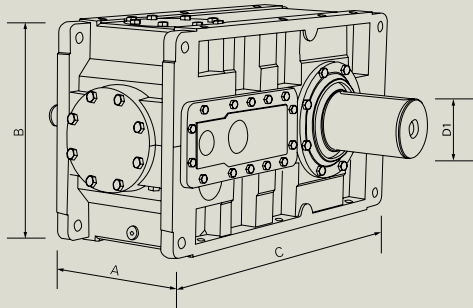
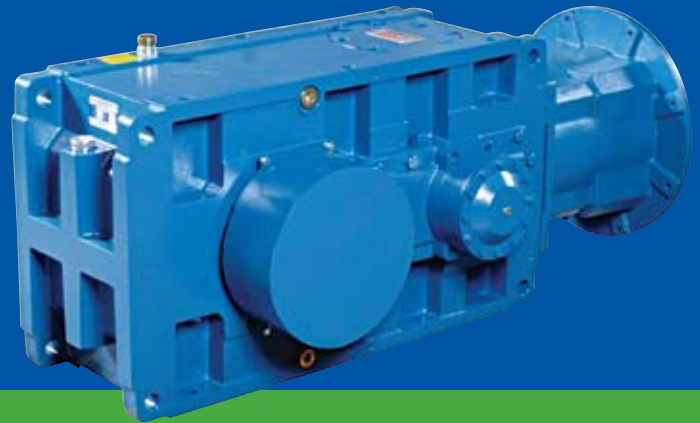
Engineered to Keep You Moving

Series G Industrial Gearbox

- Horizontal split-case design for easy access and maintenance
- All units are available with hollow bore for output shaft mounting
- Large diameter output shaft and bearings to maximize overhung load capacity
- Horizontal or vertical mounting positions
- Optimized gear geometry for maximum strength and efficiency, minimum noise and vibration
- Case hardened and ground helical gears, and hard-finished spiral bevel gears
- Double, triple, and quadruple gear stages
- Optional cooling features
- Bed plates and alignment-free mounts

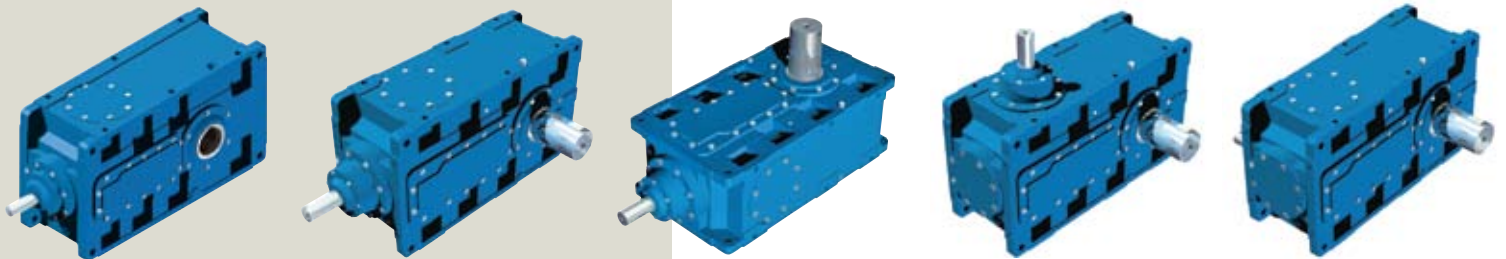
The David Brown Series G Industrial Gearbox *from Cone Drive*

Heavy load capacity and maximum efficiency in an easy-to-service split-case housing



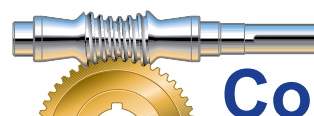
Unit	Gear Case Dimensions			Solid Output	Hollow Output
	A	B	C	Shaft Diameter (D1)	Bore Diameter
G14	11.8	18.1	32.3	4.50	3.75
G15	11.8	18.1	32.3	5.00	4.38
G16	15.0	23.6	41.7	6.00	5.00
G17	15.0	23.6	41.7	6.75	5.75
G18	19.7	30.3	48.8	7.50	6.25
G19	19.7	30.3	54.0	8.25	7.11
G21	23.6	36.6	65.2	8.50	8.25
G22	23.6	36.6	67.5	9.25	9.00

All dimensions shown in inches.



Cone Drive Operations, Inc.
240 E. 12th Street, PO Box 272
Traverse City, MI 49684

888.994.2663 • www.conedrive.com



Cone Drive™

Engineered to Keep You Moving