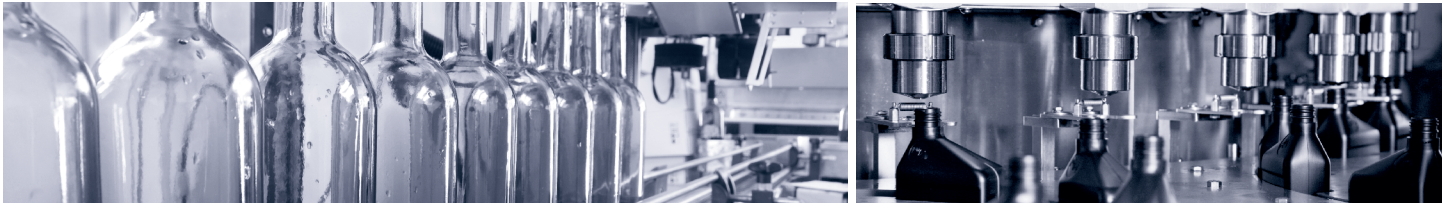


MODEL RG FLANGE

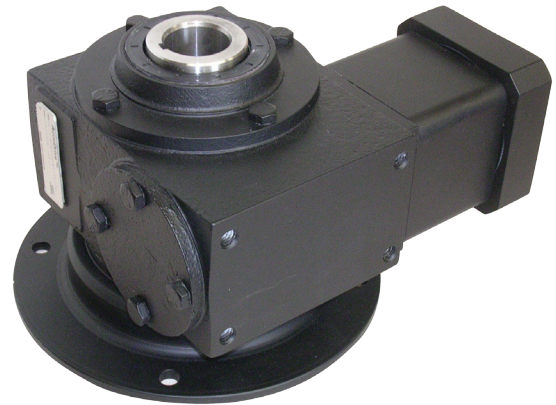
THE RIGHT PRODUCT FOR THE RIGHT SOLUTION.

ACCUDRIVE



GREATER FLEXIBILITY

The Model RG is now available with an output flange simplifying the connection to your machine. With the built in modularity of the Model RG, many more applications are now possible with it's adaptability to both Servo and NEMA frame motors. Only in the Model RG will you get true double-enveloping worm gear technology, unsurpassed in the market where both performance and positional accuracy are demanded.



FEATURES

- **FLANGE MOUNT**
Mount on either side of reducer / mounting orientation flexibility from one flange.
- **DOUBLE SEAL INPUT & OUTPUT**
No leak issues regardless of mounting position
- **ZERO BACKLASH COUPLING**
Maximizes overall stiffness and ensures proper fit of couplings
- **MULTIPLE LEVELS OF BACKLASH**
Options for positional accuracy
- **DOUBLE ENVELOPING GEARING**
Highest capacity allowing to minimize envelope or improve reliability
- **LUBRICATION**
Factory filled with synthetic oil and no breathers
- **MULTIPLE OUTPUT SHAFT OPTIONS:**
Inch or metric shafts as solid or hollow including shrink disc

SPECS

CENTER DISTANCES	1.50", 2.00", 2.50", 3.00" and 3.50"
OUTPUT TORQUE	UP TO 8540 LB. IN.
GEAR RATIOS	FROM 5:1 IN SINGLE STAGE TO 60:1 IN DOUBLE STAGE
INPUT OPTIONS	ANY SERVO OR NEMA FRAME
OUTPUT OPTIONS	MULTIPLE OUTPUT OPTIONS: SOLID / HOLLOW / SHRINK DISC
ADDITIONAL FEATURES	DOUBLE-SEALED ON BOTH THE INPUT AND OUTPUT SHAFTS
	BACKLASH FROM 6 ARCMINUTES TO 32 ARCMINUTES
	FACTORY FILLED WITH SYNTHETIC OIL