

Flexible & Powerful: Series B Right Angle Worm Reducer

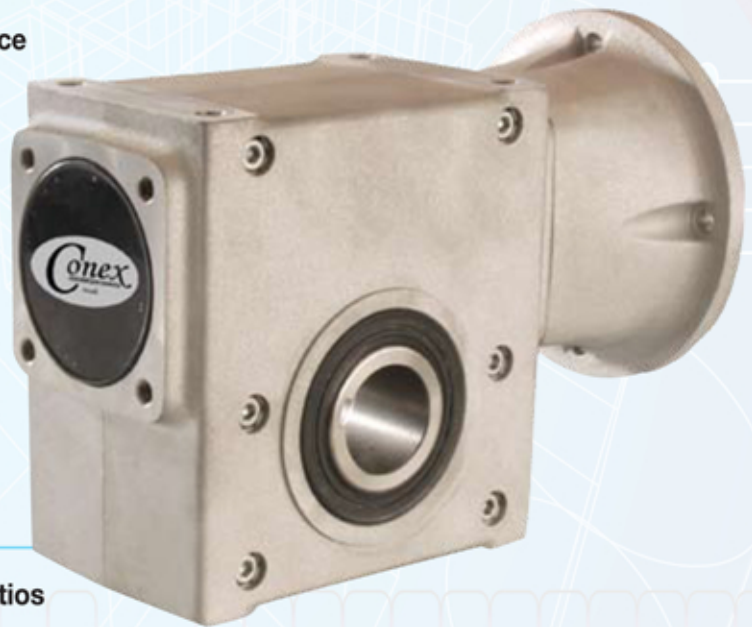
Series B is highly flexible and offers the industry's highest ratings in a lightweight aluminum housing.

Cone Drive's brand is synonymous with quality and high performance. The Series B offers customers that same expectation of performance and quality in an affordable and flexible package. Cone Drive developed Conex™ gearing for the Series B, allowing it to exceed all other worm gear manufacturers ratings. In addition, the Series B offers both dimensional interchange and flexibility. This flexibility means you can easily change output shaft handing or easily slide the motor off the shaft for replacement if necessary.

- > Featuring Cone Drive Conex™ Geometry - Industry leading performance
- > Downsize against cylindrical worm gear manufacturers
- > Dimensionally interchangeable against other manufacturers
- > Flexible on both input and output
- > Plug-in output shaft for simple and easy changeover
- > Patented motor connection that eliminates fretting corrosion and provides easy motor removal
- > Exact ratios
- > Lightweight aluminum housing

Specifications:

- > Available in 9 sizes and 25 standard ratios
- > Single and double reduction
- > Horsepower range from Fractional to 20 HP
- > Universal housing
 - Mounts in any position
 - Compact – space savings
- > Factory filled with synthetic lubricant
 - No vents or breathers
 - Maintenance free
 - No lubricant service required
- > Standard with hollow bore, plug-in solid output shafts
- > Motor adapters for either NEMA or IEC frames
- > Bolt on mounting feet and flange



For more information on the products and solutions that are Engineered to Keep You Moving, contact your Cone Drive representative today.

888.994.2663
www.conedrive.com

02/09 1M



CONEDRIVE®
GEARING SOLUTIONS