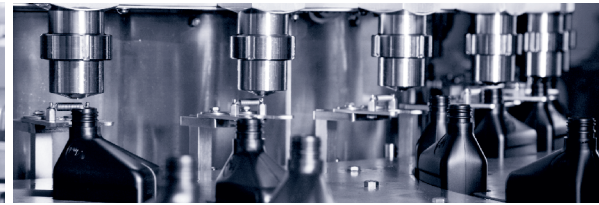


SERIES LE

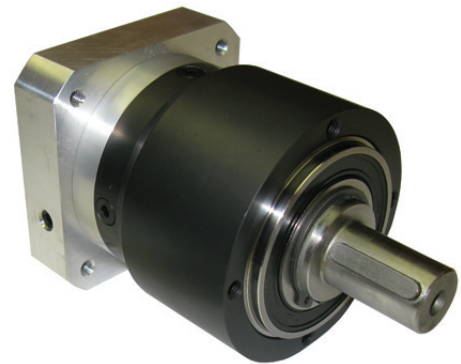
PRECISION PLANETARY GEARHEAD

ACCUDRIVE



GREATER FLEXIBILITY

The Series LE planetary servo gearhead offers the same level of quality as the Series E with a new output design which is dimensionally interchangeable with most economical planetary gearheads. However, the Series LE offers improvements in motor mount connection and lower noise.



FEATURES

- HONED PLANETARY GEARING
- HIGH TORQUE CAPACITY AND TORSIONAL RIGIDITY
- 200% SHOCKLOAD CAPACITY
- QUIET AND SMOOTH
- EXACT RATIOS
- BACKLASH AS LOW AS 6 ARC-MINUTES
- UNIVERSAL HOUSING:
Mounts in any position
Compact – space savings
Rugged construction
- FACTORY FILLED WITH GREASE:
No vents or breathers
Maintenance free; no lubricant service required
- FAST AND ERROR-FREE MOTOR ASSEMBLY:
Motor adapter plate provided to mate to your servo motor
Integrated, zero-backlash clamping coupling

SPECS

CASE SIZES	50, 70, 90, AND 120
OUTPUT TORQUE	UP TO 312 NM (2760 LB.IN.)
GEAR RATIOS	FROM 3:1 IN SINGLE STAGE TO 100:1 IN DOUBLE STAGE
INPUT OPTIONS	ANY SERVO FRAME
OUTPUT OPTIONS	SOLID KEYED SHAFT DIMENSIONALLY INTERCHANGEABLE AGAINST MOST MANUFACTURERS

